

Fire Management in BC

“ So what now?”



Beautiful BC 2104



Beautiful BC 2017

Association of Kootenay Boundary Local Government

April 18, 2015

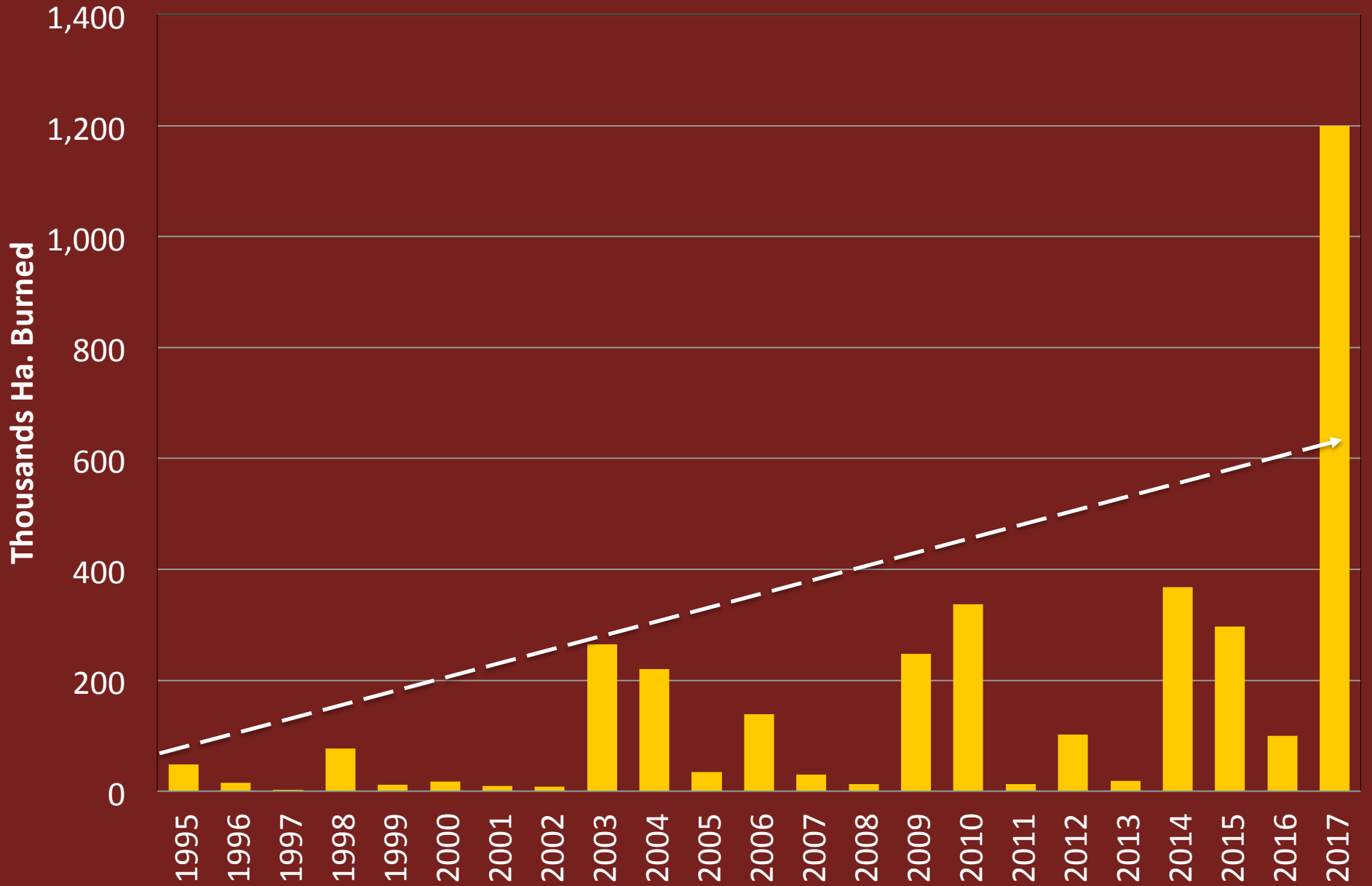
*Brian Simpson Wildfire
Management Services 1041469
BC Ltd.*

Converging Challenges

- Increasing development more values to protect
- Limits to suppression capacity, effectiveness & budgets (\$568M spent 2017)
- Mountain pine beetle forest fuel type spread rates 2.6 times faster
- Severe fire expected to double by 2050 due to climate change (Insurance Bureau of Canada)
- Increased impacts to natural resources, government assets, industries, communities and jobs

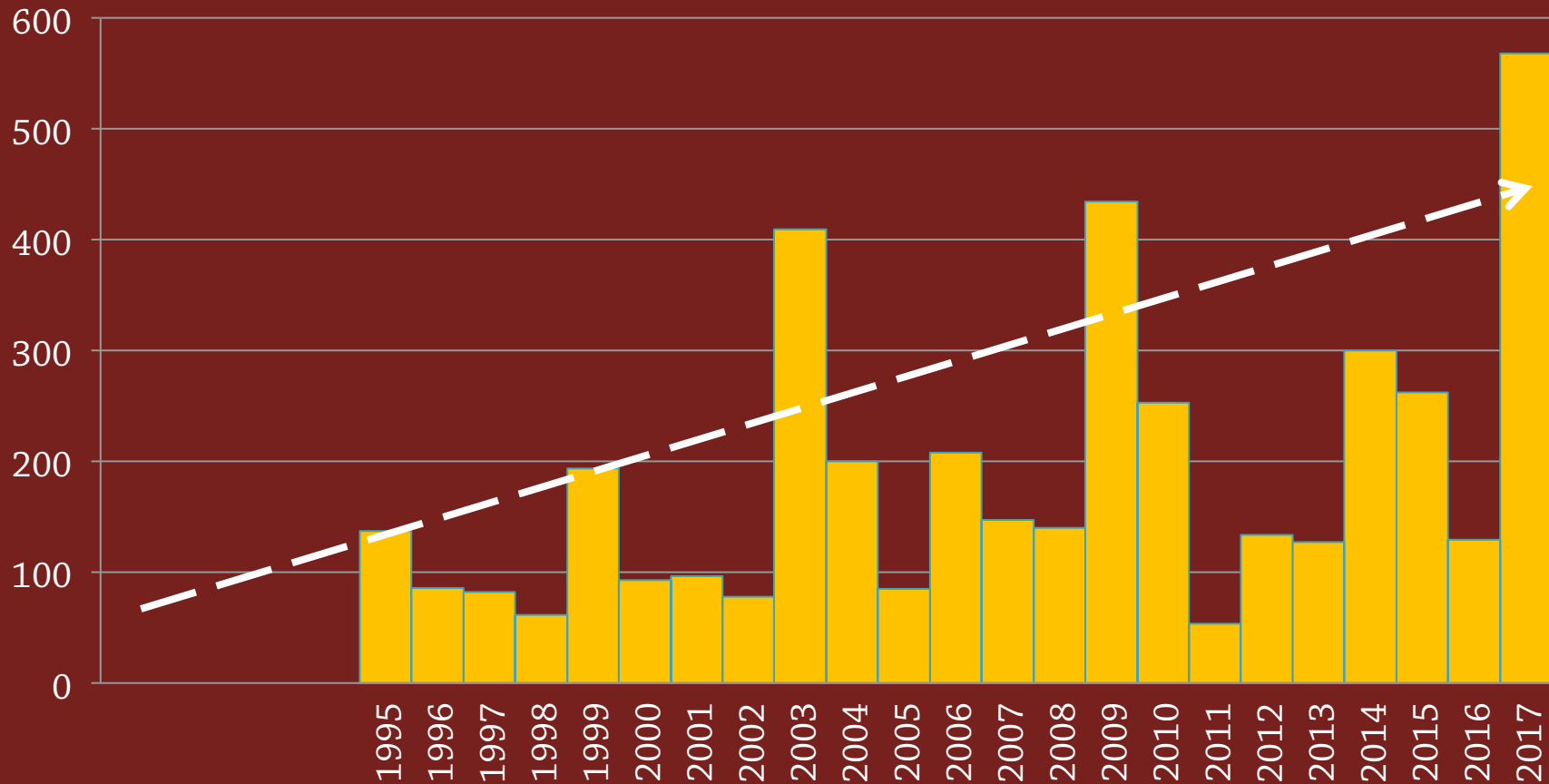


Area Burned History



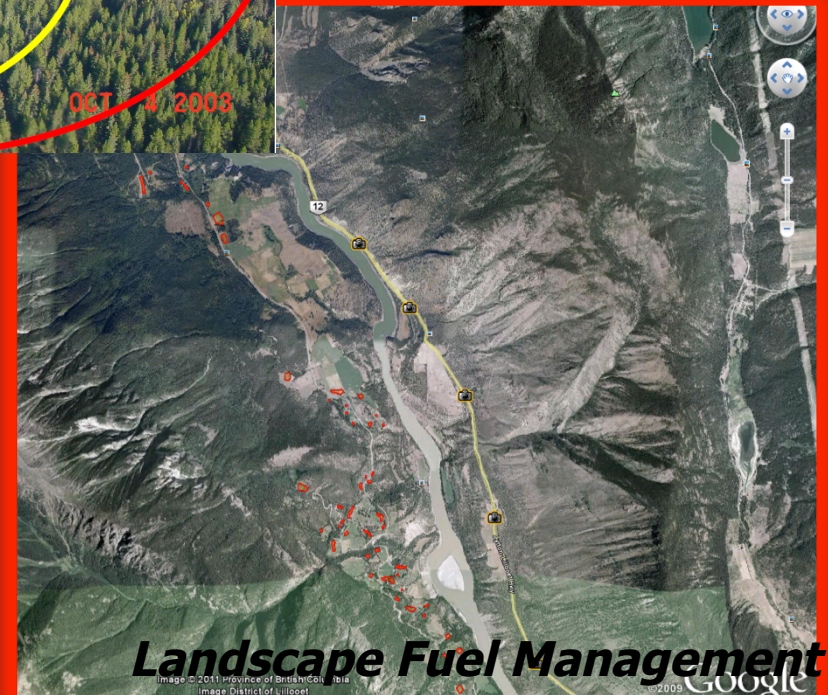
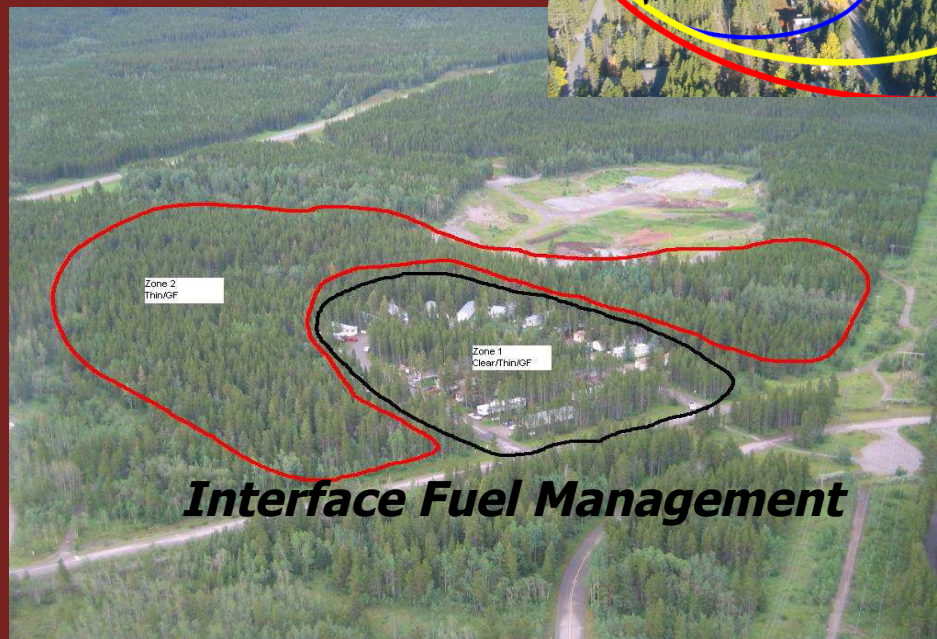
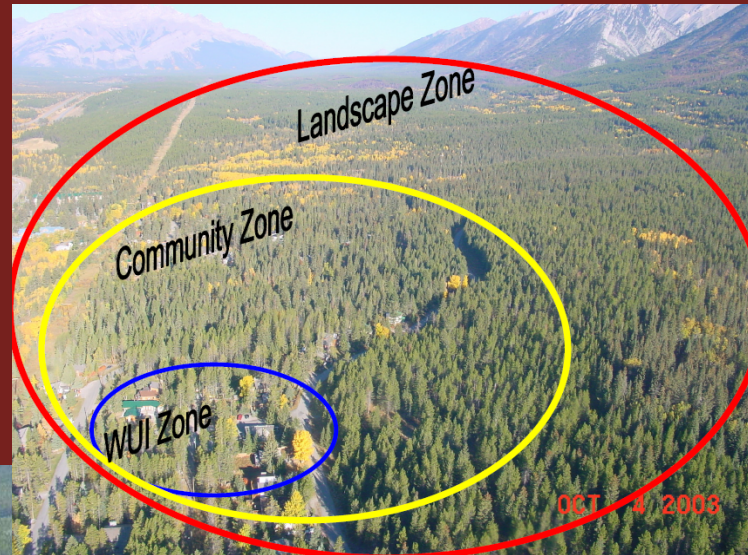
Direct Fire Expenditures

Total Costs



(budget components shown in \$100,000's)

Fire Management All Scales



“Landscape Scale” Fire Management & Planning (LFMP)

- Treat Wildland fire as “**The Key Driver**” our decision processes
- Integrate wildland fire risks in all resource management/land management decisions
- Active management to create fire resilient landscapes
- Foundational building block for all landbase planning, authorizations & activities
- Integrate strategies into current activities (look for alignment)
- Long term priority “way we do business” no quick fix



Landscape Level Fire Management Planning



Values at Risk

Smith Creek West Kelowna



West Side Road West Kelowna



Values at Risk

WAC Bennett Dam



Values at Risk

Dokie Wind Farm NE BC



Values at Risk



Sun Peaks with McGillivray Lake Fire in background 2003

Values at Risk

Bobby Burns CMH Lodge



Values at Risk

**Mackenzie TSA
Fire Resistant Cut Blocks**



Is this what we want more of?

Ashcroft 2017



Slave Lake 2011



Boston Flats Trailer Park
2017



West Kelowna 2003

